



FCAQI NEWS

President: Peter Reinke; Vice President: Owen Glover
Secretary: Sonja Park; Treasurer: Cathy Reinke
Museum Coordinators: David & Dejon Simons

www.qldpoultry.com

Feather Clubs Association of Queensland Newsletter

Winter Edition



Presidents Report

Hi all, here we are again heading towards the end of a very busy show season and starting to think about the impending breeding season again. This has personally been the busiest half year in poultry I have ever been a part of. I am going to touch on a few personal things I have seen or been a part of to help show you why I think poultry is in a very good state at the moment in many ways.

Entries at many Ag, club and feature shows have been equal to or higher than recent years and more importantly the amount of exhibitors seems to be growing. It's very important for all types of shows to be healthy as I think they feed off each other.

One very pleasing event I was honoured to be a part of was judging a little Ag show in Capella, Central Queensland. Why you may ask? Well, the Central Highlands Feather Club with their little band of members led by a very enthusiastic Secretary Nicole Taylor are making a real difference up there in that area. As well as running their own growing Club Show in Emerald they are also running the poultry section at a few other Ag shows in surrounding towns and what a job they do. This is probably happening in other areas also by other Poultry Clubs but to witness it and be a part of it was very refreshing for me. Well done guys.

Our National was another very big highlight. It was a huge success for Poultry and our Queensland exhibitors sure did us proud bringing home many prizes. Luckily it's only every four years as I think we all need the time to recover especially the hard working committee who worked tirelessly for the past year.

In This Issue

- **President's Report**
- **The FCAQI Avicultural & Poultry Museum Review**
- **Cooking With Culls**
- **Controlling Parasites in the Backyard Flock**
- **Public Information Day—Felton Food Festival**
- **Judges and Stewards Online Training Course**
- **Breed Feature—Pekin Ducks**
- **Show Results**

"To promote in every way the breeding and exhibition of poultry by whatever means deemed necessary by the Association.

To assist in the improvement and maintenance of the Australian Poultry Standards and to recognise that these are the official standards used in the adjudication of domestic land fowl, waterfowl, guinea fowl, turkeys and eggs at shows within Queensland.

To undertake activities that preserve and promote the history and appreciation of the standard breeding and exhibition of poultry and aviculture and other ornithological pursuits."

FCAQI Constitution

Presidents Report—Continued

On the FCAQI front our very first online Judging and Stewarding Course was run with many more participants than we expected but thanks to Cathy Newton's skills designing and running the course it went very well. This online version will never replace the hands on kind but fills a huge void and all the positive comments from the participants was overwhelming. A big thank you also to the very experienced people from various states who accepted our request to help mentor and answer all our student's questions. I am sure we will be running this course again.

All our FCAQI Committee have been very busy as always, not just doing the usual processing day to day FCAQI stuff but all out there helping or organising our own shows and attending many more talking and listening to as many people as possible. I have said many times one of the most pleasing things about being involved in FCAQI is the opportunity you get to talk to so many in so many areas.

I got told some good advice just the other day. The 80/20 rule. If you can keep 80% of people happy then you are doing well. If everyone is happy then maybe you aren't doing or trying hard enough and if you only have 20% happy then things aren't going real well. We, the FCAQI committee are here to serve you, the clubs as you know and we are always wanting your positive input to help us move forward together to make this great hobby of ours better for the next generation.

Next up I have my own Clubs Show then our beloved EKKA, Queensland's biggest Poultry gathering and event. Entries are the highest they have been for many a year and the amount of new exhibitors these past few years is very promising for the future, FCAQI is again grateful to be allowed a presence and involvement in this great event as it is maybe one of the only chances where we can catch up with a lot of people from different parts of our huge state.

Happy breeding season everyone.

Peter Reinke

Contact Us

Contact us if you have queries or suggestions

C/- Sonja Park
134 Old Coach Rd,
Torbanlea QLD

0400 243 819

secretary@qldpoultry.com

Visit us on the web at
www.qldpoultry.com

Contacts

Sonja Park	Ph: 0400 243 819 secretary@qldpoultry.com
Peter Reinke	Ph: 0400 677 978 reinkeelectrical@hotmail.com
Owen Glover	Ph: 0455 285 690 owenglover5@bigpond.com
Catherine Reinke	Ph: 0488 440 785 bearlybasiccreations@live.com.au
FCAQI web address	www.qldpoultry.com
Dejonn Simons	(Museum Contact) Ph: 5499 0553 dejonn.simons@bigpond.com

The FCAQI Avicultural & Poultry Museum Update—Australia Day 2016

People from South East Queensland had a huge range of pleasurable and exciting activities on offer for Australia Day 2016. One of the most outstanding would have most certainly been the celebrations that had been planned by the events team at the Caboolture Historical Village.

A full day of entertainment included musical entertainment from the Bits and Pieces Performance Band, the Homestead Singers and the very entertaining Danish Folk Dancing Group, as well as the Morayfield Kilties Pipes and Drums Band and also a substantial vintage car and tractor parade.

A “Fashion Parade” involving fashions from Australian movies held outdoors at 11.00am on the day proved to be extremely popular despite visitors having to sit through a light shower which actually cooled things down to a more comfortable temperature.

The “Town Crier” and the “Cane Toad Racing” proved to be entertaining additions to the events program.



The FCAQI Avicultural & Poultry Museum had an extra special one off display that David and Dejonn Simons had planned for the day. This display, set up outside the entrance to the poultry museum under some gazebos and in a very pretty setting, centred around a collection of attractive poultry and most certainly drew a lot of attention and favourable comments on the day.

On display were some copies of artwork produced by George Raper who was a Midshipman aboard the *Sirius* – the flagship of the First Fleet. He was only 19 when he arrived on our shores on 26 January, 1788. The First Fleet did not carry professional artists on the voyage and he learnt drawing as part of his naval training. A number of drawings depicting the first sightings of Australia’s varied bird life have been attributed to George Raper.

A mannequin dressed in an Army uniform was displaying information about the 'Pigeons in War' wing. Many visitors commented on how informative the display was and then proceeded to enter our museum and view all the varied and different displays.



Although the predicted showers did eventuate, it didn't dampen the enthusiasm and spirits of the volunteers operating the respective displays, or the many visitors to the Village who all enjoyed a great Australia Day – albeit a little damp.

If you want to help out and be part of a future display day, please contact Dejon Simons on dejon.simons@bigpond.com or (07) 5499 0553 or become a "Friend of the Museum" for \$20 a year and receive four newsletters annually.



MICRONISED STOCKFEEDS



Mi-Feed Laying Mash
NUTRITIONALLY BALANCED 15% PROTEIN DIET
NO RESTRICTED ANIMAL PRODUCTS USED
AUSTRALIAN MANUFACTURED & OPERATED
FEED FROM POINT OF LAY 18-20 WEEKS
MANUFACTURED FROM PREMIUM QUALITY
GRAINS
ADDED CALGRIT FOR BETTER EGGSHELL
QUALITY

Mi-Feed is a boutique stockfeed mill on the Sunshine Coast at Yandina. In operation since 1979, we strive to give your chickens the best possible feed.

All of our poultry rations are specifically formulated with the essential vitamins, minerals and amino acids to keep them in top health. We cater for the fussiest birds with a large range from chic starter mash; laying mashes and layer pellets. Available in produce stores.

Mi-Feed Laying Mashes are a fully balanced ration which has been formulated to cater for the needs of the backyard & show bird. It is a purely vegetarian mash that doesn't contain Restricted Animal Material such as meat meal or animal by-products. Mi-Feed Laying Mash contains all the essential vitamins, minerals, and amino acids such as lysine, methionine, cysteine, threonine, tryptophan & isoleucine which provide the ultimate performance for a laying bird.

For more information contact us on www.mi-feed.com.au (07) 5454 7777



COOKING WITH CULLS

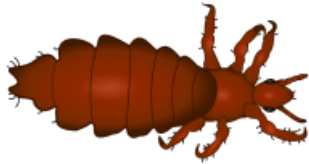
For those of you who choose to eat your non-show birds or raise bird purely for the table here's a recipe to spice up dinner time and make it more interesting.

Chicken or Duck Liver Pate

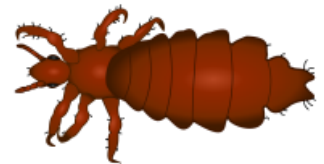
- 1 1/2 teaspoons gelatine
- 1 tablespoon warm water
- 3/4 cup of Redcurrant Jelly
- 40g butter
- 2 cloves garlic, crushed
- 2 brown onions, chopped
- 1/4 cup of fresh sage leaves chopped
- 8 bay leaves
- 600g of chicken livers or duck livers or mix of both
- 1/2 cup of port
- 350g cold butter chopped
- seasoning to taste
- Toasted bread or crackers to serve



1. Absorb gelatin into warm water
2. Heat redcurrant jelly, boil for 5mins, remove from heat and add gelatin and stir until dissolved. Pour into a loaf tin (22cmx8cm). Refrigerate for 2hrs.
3. Place 40g butter, garlic, sage and bay leaves in a fry pan and cook until softened, add the livers and cook for about 1-2 mins, add the port and cook for a further 1min. Remove from heat and take out the bay leaves.
4. Place mixture, seasoning and cold butter in a food processor and process until a smooth paste. Pass this mixture through a fine sieve. Place the final mix carefully over the top of the redcurrant jelly, refrigerate for at least 2hrs.
5. Serve on toast or crackers with pickles cucumbers.



Controlling Parasites in the Backyard Flock



I am hearing cries of ewwwwww.....not again or this hasn't happened to me yet. Well the reality of it is that parasites whether they be internal or external are part of poultry owning and require management.

There are questions to be answered:

1. What are parasites?

A parasite by definition is an organism that lives on or in another organism from which it obtains its nutrients for life. This is typically achieved by sucking blood of the host.

Ectoparasites live on the outside of the host, these are typically lice mites and fleas.

Endoparasites live on the inside of the host, these are typical worms and some protozoa.

2. Are they dangerous or harmful?

In low numbers the impact on individual birds is small, however in larger numbers they will overall make birds unthrifty, reduction in laying and fertility, and can even kill due to poor nutrient uptake and anemia.

To humans they are not particularly harmful although bites have been reported from ectoparasites and I can vouch for the fact that they make you itch.

And remember if you are showing it is common courtesy and part of the rules to exhibit fowls parasite free.

3. Are waterfowl effected?

Simply the answer is yes, all poultry can suffer from parasites to a degree, waterfowl due to their bathing habits seem less effected by parasites but I have still seen lice on ducks and geese.

4. How did they get here?

- First guilty partner in crime is the humble backyard wildlife as innocent as it looks harbors allsorts of parasites and diseases. These small birds like to share feed with your flock and thus direct contact is achieved and parasite transfer via contact or droppings happens.
- Another problem are parasites that reside in the ground for a period of time for example stick fast fleas, if you have recently moved or have had issues before then it is wise to be cautious or treat the area before introducing new stock.
- New stock purchases can bring in allsorts of problems, it is best to quarantine and treat or monitor new stock for a period of time before mixing with you existing flock as you may introduce issues.
- Returning from exhibiting would seem innocent but you might be bringing something home that is undesirable. 99% of exhibitors are great with parasite control, however it pays to be cautious.

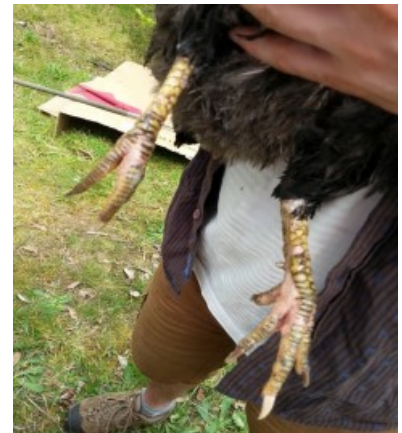
5. The most common offenders, what are they?

Mites

Mites are small, in fact very small there are two types that cause problems; those which inhabit the feathers and those which inhabit the leg scales.

Red and black mites inhabit the feathers and suck blood, they look like tiny (1mm) black or red spiders, typically do not live on the bird 24/7 but inhabit small cracks within the nesting and roosting areas, coming out at night for a feed. Common areas to site these are around the warm vent area and under the wing, particularly after dark, but if you are lucky then you may see them in nesting areas typically on brooding hens.

Scaly leg mites inhabit the leg scales of the bird causing excessive thickening of the scales and lifting. Eventually this becomes painful and can result in loss of toes. You will not be able to see these tiny guys as they are buried deep under the chickens leg scales (see photo right for chicken with scaly leg mite)



Lice



Lice can either be blood sucking or more commonly they eat feather and skin debris, this doesn't mean that they are not as harmful.

Lice inhabit their host 100% of the time and quickly die once they have left its host. These guys are around 1-4mm in size so are still tiny. Common areas to site these are in and amongst the feathers or quite often eggs are seen around the warm vent area



Stickfast Fleas

These are one of the more troublesome pests and can be found not only on chickens but also on other domestic/wild animals as well.

They are small red/brown flea shape but do not move and locate themselves on areas of bare skin (combs and wattles most commonly), females attach themselves to the host for their entire life and produce eggs which drop to the floor. The eggs then hatch and the larvae feed on debris in the litter, once mature the larvae then burrow into the litter about 100mm and cocoon. The cocoons hatch about 2-3 weeks later and infection starts all over again.

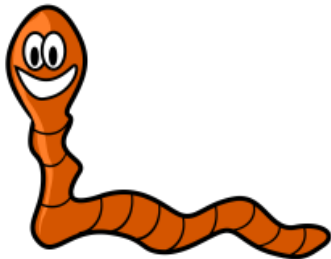
Female fleas can lay over 500 eggs each so it certainly pays to be on top of this problem before it starts.

Louse Fly / Keds

Louse fly look the same as a house fly but on closer inspection they are much flatter and have a few adaptations to enable them to crawl quickly through their hosts feathers. Both the male and the female feed on the hosts blood. This is not a commonly seen parasite and is more likely to be seen on pigeons than on poultry or waterfowl.

My apologies if you are scratching now.....however it is now time to look inside at the worms that fowl.

Large intestinal round worms



This species of worm are typically 5-8cm long, while almost round. They live in the large intestine feeding on the hosts blood causing extensive damage to the intestine wall. Signs of infestation include loss of egg production and pale yolk colour and anemia are the biggest signs of a large roundworm infection as well as a loss in weight gain for growing birds. These are of particular trouble for people who do not clean pens regularly or have runs that have been used extensively for many years.

Cecal worms

Cecal worms reside in the ceca of chickens and although they do not do much damage they can carry blackhead parasite which is lethal to turkeys. They are typically 1.5cm long and will be rarely seen. Chickens will acquire these parasites through the consumption of a vector such as earthworms. Typical size for these worms is around 1cm.

Thread worms

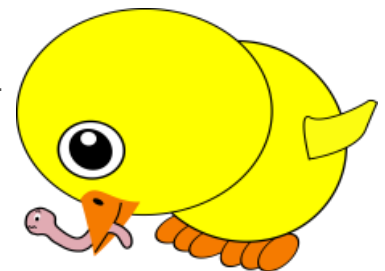
These are the bad boys of the chicken worms, they live in the crop area, esophagus or intestine, they are bad news for chickens and their impact can result in rapid weight loss and death. As their name states they are thread like in nature, extremely fine and approximately 3-5cm long.

Gape worms

Gape worms typical like to associate themselves with the windpipe area of chickens, they attach themselves to the tissue to feed. If many of these congregate in this area they will cause a chicken to "gape", this is where the bird will reach upwards with an open mouth in a distressed manor to assist with breathing, this can be mistaken for respiratory infection. These will result in death in young birds if heavily infected. Typical size for these worms is under 1mm and again are quite fine width ways as well.

Tapeworms

These are the largest of the worm family and really do very little damage in small numbers, they are segmented and ribbon like in structure, they can also be quite long with recorded lengths in humans being 3 meters, however in chickens they are likely to be around the 200mm. Sections will break off so are the most likely to be seen in the droppings from time to time if infection is present.



Eye Worm

As the name states these reside in the eye under the third eye lid. They have another host which is the cockroach which is why they are seen in warmer climates more commonly. The worm enters the chicken by the chicken eating a cockroach, this worm then travels to the eye area and resides under the third eyelid causing irritation and blindness as the eye swells. All though this is not fatal it is irritating to the bird and results in blindness.

Typical size for these guys is around 1cm.

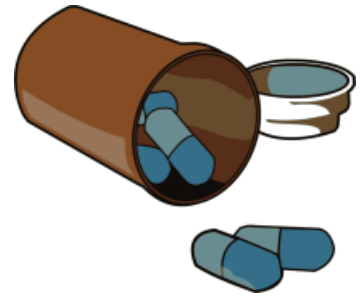
6. Treatment Options

So for mites and lice there are many products that can be applied topically in powder form such as Pestene powder, however these do need to be applied regularly to break the outbreak. The coop itself is best treated (especially if mites are present), products such as Coopex are specifically designed for this and less smelly than the traditional Maldison 50 that is used.

Other products off label that have been commonly used are those containing permethrin, these have been reported as effective to assist control and prevent outbreaks. Also products such as dog fleas treatments have also been used these contain fipronil, and products used for cattle dips such as Cydectin. However these are all off label currently and dose rates are unknown so care needs to be taken as impact long term is unknown.



Worms are easily treated via a tablet or solution given in the water, there are many products available at produce stores, however only some wormers treat only a few target species so depending on the issue would be best to check the label for the completeness of the coverage for all worm species. Again some off label products can be used, ivermectin or moxidectin based pour on wormers have been reported as effective but as these are currently off label the dose rate or impact is not known.



Special thanks to anyone who assisted with photos for this article.



Mi-Feed Laying Mash
NUTRITIONALLY BALANCED 15% PROTEIN DIET
NO RESTRICTED ANIMAL PRODUCTS USED
AUSTRALIAN MANUFACTURED & OPERATED
FEED FROM POINT OF LAY 18-20 WEEKS
MANUFACTURED FROM PREMIUM QUALITY
GRAINS
ADDED CALGRIT FOR BETTER EGGSHELL
QUALITY

Mi-Feed is a boutique stockfeed mill on the Sunshine Coast at Yandina. In operation since 1979, we strive to give your chickens the best possible feed.

All of our poultry rations are specifically formulated with the essential vitamins, minerals and amino acids to keep them in top health. We cater for the fussiest birds with a large range from chic starter mash; laying mashes and layer pellets. Available in produce stores.

Mi-Feed Laying Mashes are a fully balanced ration which has been formulated to cater for the needs of the backyard & show bird. It is a purely vegetarian mash that doesn't contain Restricted Animal Material such as meat meal or animal by-products. Mi-Feed Laying Mash contains all the essential vitamins, minerals, and amino acids such as lysine, methionine, cysteine, threonine, tryptophan & isoleucine which provide the ultimate performance for a laying bird.

For more information contact us on www.mi-feed.com.au (07) 5454 7777



Public Information Day—Felton Food Festival

Local Poultry and Waterfowl Clubs show off their Hobby to the public at the Felton Food Festival Qld



The Golden West Waterfowl Club & Toowoomba Poultry Club set up a display of 19 different breeds of poultry and waterfowl along with the history behind the birds at the Felton Food Festival on Sunday 10th April 2016. With over 11,000 people coming through the gates at Felton, our tent was very popular with adults and children alike. As a part of the display some Chickens and Ducklings were placed in a tub, where children and adults were more than welcome to pick them up. Most of the day, you could not see the tub due to the amount of interest in holding them. The main purpose and

focus of our 2 clubs putting on the display was to show all the different breeds and promote breeding and handling of our birds to the general public.

At our local Ag Shows, the Poultry shed is one of the most popular attractions at the Show. Having all these people going through the shed may encourage some member of the public to take up the hobby of Poultry showing or simply having different breeds in their own backyard.

The local clubs have their Annual Shows coming up at the Toowoomba Showgrounds.

The Toowoomba Poultry Club will be having their Annual Show on Sunday the 29th May 2016.

The Golden West Waterfowl Club has their Annual Show on Sunday 10th July 2016.

The Public is more than welcome to come and see the wide range of birds that will be on Display at both of these events.

If you would like any further info of the upcoming shows please call Adam at Allen's Rural & Hardware Supplies on 0746 300 179



FEATHER CLUBS ASSOCIATION OF QUEENSLAND INC TRAINING



FCAQI Judges & Stewards Course

Secret group

Joined ▾

✓ Notifications

...

In May the Feather Clubs Association ran our first online Judging and Stewarding course. In recent years it has become apparent that people have had difficulty getting to physical workshops held at venues. We have had workshop run in the South East Queensland area and also one in northern Queensland a few years ago, but overall attendance has never been strong due to distances and commitments. This online alternative was offered as a trial to see if it was helpful to people who were unable to attend on other occasions.

As the course was to be run through a Facebook group, it was advertised online in April through the FCAQI website, the Facebook page and other groups online. We received 45 applications to enter the course and these people began it in early May. We also had the support and presence of Kevin Smith from Victoria, Denis Lyne from Tasmania and Mal Fuller from South Australia who were interested in the trial and keen to support the initiative by Queensland. The majority of students were Queensland residents but we also allowed a number of cross-state students to participate. The course ran through a private discussion group for approximately two weeks and included the same topics as are included in the physical workshop. The participants were required to interact on a large number of topics, engage with online activities and complete a test.

At the conclusion of the course, 37 participants satisfactorily completed the course and received Certificates authorized by our Judges Registrar, Peter Reinke. A lot of positive feedback was received on the experience and discussions will take place to determine whether the online version of this workshop will be repeated next year.



Breed Feature—Pekin Duck

Origins of Breed: Asia (China)

Classification: Heavy 3-4kg

Breed Characteristics

1. Carriage—Body is upright and resembles a boat resting on its stern
2. Body—Broad, average length with full shoulders
3. Breast—Broad, smooth and full, keel shows between legs, paunch deep and broad, stern just clear of ground
4. Wings—Short and close to sides
5. Tail—Well spread and carried high
6. Head—Large, broad and round, skull high rising quickly from bill, nape feathers can be erect giving impression of a “mane”
7. Bill—Short, broad and thick, convex or straight, bright orange in colour without any dark spots
8. Eyes—Large and bold but can be shaded by brow and cheeks, leaden blue in colour
9. Neck—Short, thick with a slight gullet on throat
10. Legs—Stocky and stout causing erect carriage, bright orange in colour
11. Feathers— Cream or creamy white and abundant



Breed Character

Pekin ducks were originally imported from China to the USA in 1873, they took off as a popular breed due to their friendly nature and ability to be dual purpose. Average egg production per year is around 200 however exhibition birds may lay significantly less than this number, Pekins are less maternal than other ducks and thus are less likely to be broody.

Pekins make wonderful pets due to their calm friendly nature and are almost flightless due to their weight. However being a large heavy breed they consume quite a large amount of feed and produce a large amount of manure for their size.

They are long lived 9-12 years on average.



Show Reports and Results



Woodford Poultry Club Annual Show – 1 May 2016

Judges: Ian Pask (HFL and HFB), Andrew Reddiex (SFL), John Kendall (SFB)

Grand Champion Bird of Show – K&M Clifford (bantam Black Red L/L OEG cockerel)

Reserve Champion Bird of Show – D Andrew (bantam Black Langshan pullet)

Champion Softfeather Large – J&D Rutledge (Black Langshan pullet)

Reserve Softfeather Large – G Robinson (RIW SC female)

Champion Hardfeather Large – B&D Rewald (Plain Face Pit Game pullet)

Reserve Hardfeather Large – C Plowman (Black Red D/L OEG pullet)

Champion Softfeather Bantam – D Andrew (Black Langshan pullet)

Reserve Softfeather Bantam – N Ballinger (White Wyandotte cockerel)

Champion Hardfeather Bantam – K&M Clifford (Black Red L/L OEG cockerel)

Reserve Hardfeather Bantam – B&D Rewald (Black Red Australian Game pullet)

Ch SFL Male – H Sutton (Black Langshan cockerel)

Reserve – G Robinson (RIR S/C cockerel)

Ch SFL Female – J&D Rutledge (Black Langshan pullet)

Reserve – G Robinson (RIW SC female)

Ch HFL Male – B&D Rewald (OEG Black Red D/L cockerel)

Reserve – B&D Rewald (P/F Pit Game cockerel)

Ch HFL Female – B&D Rewald (P/F Pit Game pullet)

Reserve – C Plowman (OEG Partridge D/L pullet)

Ch SFB Male – N Ballinger (White Wyandotte cockerel)

Reserve – N Ballinger (White Leghorn cockerel)

Ch SFB Female – D Andrew (Black Langshan pullet)

Reserve – I Munro (Light Sussex pullet)

Ch HFB Male – K&M Clifford (OEG Black Red L/L cockerel)

Reserve – B&D Rewald (Muff Pit Game cockerel)

Ch HFB Female – B&D Rewald (Black Red Australian Game pullet)

Reserve – B Franklin (Pile Modern Game pullet)



Ch Pair of Females – G Robinson (large RIR S/C)

Ch Exhibition Pair – K&M Clifford (bantam Black Red L/L Wheaten)

Ch Junior (up to 10 years) – S Forrest

Ch Junior (11-16 years) – K Rutledge

FCAQI Exhibitor Encouragement Award – K Lush





Show Reports and Results



2016 Lawnton Poultry Club Inc & North Pine Poultry Club inc Rare Breed & Rare Variety Show—15 May 2016

Judges: Kerin Politch (HF, WF and Juniors), Wayne Patterson (SF)

Grand Champion Rare Breed - David & Dejonn Simons (White Frizzle bantam cockerel)
Reserve Champion Rare Breed – Jane Cockerton (White Australian Call drake)

Grand Champion Rare Variety – Andrew & Bazley (Blue Langshan bantam pullet)
Reserve Champion Rare Variety – Ross Jones & Joey Gilpin (Large Wheaten OEG)



Champion Rare Breed Softfeather Large – GT&S Croads (White Croad Langshan pullet)
Reserve Rare Breed Softfeather Large – Popplewell Family (Araucana pullet)

Champion Rare Breed Hardfeather Large – Kevin Macintosh (Black Red Malay Game cock)
Reserve Rare Breed Hardfeather Large – Len Webb (Thai Game hen)

Champion Rare Breed Softfeather Bantam – David & Dejonn Simons (White Frizzle cockerel)
Reserve Rare Breed Softfeather Bantam – David & Dejonn Simons (Blue Frizzle cockerel)

Champion Rare Breed Hardfeather Bantam – Michael Bray (Black Red Australian Game hen)
Reserve Rare Breed Hardfeather Bantam – Michael Bray (Blue Red Australian Game hen)

Champion Rare Breed Waterfowl – Jane Cockereton (White Australian Call drake)
Reserve Rare Breed Waterfowl – Matthew Demnar (Rouen duck)

Champion Rare Variety Softfeather Large – Elsie Carlton (Brown Leghorn pullet)
Reserve Rare Variety Softfeather Large – David Morley (Red Ancona cockerel)

Champion Rare Variety Hardfeather Large – Ross Jones & Joey Gilpin (OEG Wheaten hen)
Reserve Rare Variety Hardfeather Large – Ross Jones & Joey Gilpin (Henfeather OEG cock)

Champion Rare Variety Softfeather Bantam – Andrew & Bazley (Blue Langshan pullet)
Reserve Rare Variety Softfeather Bantam – David & Dejonn Simons (Rosecomb Ancona hen)

Champion Rare Variety Hardfeather Bantam – Popplewell Family (Spangled Tassel OEG hen)
Reserve Rare Variety Hardfeather Bantam – Popplewell Family (Spangled Tassel OEG cockerel)

Champion Rare Variety Waterfowl – Narelle Stone (Fawn & White Indian Runner drake)
Reserve Rare Variety Waterfowl – Jane Cockerton (White-Billed White Mallard duck)

Champion Turkey or Guinea Fowl – Narelle Stone (Slate Turkey hen)

Champion Junior Exhibit Overall – Annabel-Lee Allan (Crested drake)
Reserve Junior Exhibit Overall – Summer Forrest (Blue Langshan bantam pullet)
Champion Rare Breed Junior Exhibit – Annabel-Lee Allan (Crested drake)
Champion Rare Variety Junior Exhibit – Summer Forrest (Blue Langshan bantam pullet)

Champion Henfeather OEG – Ross Jones & Joey Gilpin (cock)
Champion Hardfeather Large Overall – Ross Jones & Joey Gilpin (Wheaten OEG hen)
Champion Hardfeather Bantam Overall – Popplewell Family (Spangled Tassel OEG hen)
Champion Crested Breed – Popplewell Family (large Araucana hen)
Champion Sussex Overall – Karen Lush (Silver hen)
Champion Belgian Overall – Davina Carmichael (White Belgian d'Uccle female)
Champion Japanese Overall – Bill & Joanne Hutchinson (Grey cockerel)

Champion Egg Exhibit – Sarah-Jane Nobbs
Reserve Egg Exhibit – Anna Jensen
Champion Junior Egg Exhibit – Simon Velge

FCAQ Encouragement Award– Annabel-Lee Allan (Crested drake)
People's Choice Award – Narell Stone (Slate Turkey hen)



Show Reports and Results



Maryborough Hervey Bay Poultry Club April Club Show—17 April 2016

Judges: Softfeather Bantam and Waterfowl - David Simons, Hardfeather Bantam - Graham Prior, Large Hard and Softfeather - Peter Artuso

Grand Champion Bird of Show - Neville Ballinger (White Wyandotte Bantam)
Reserve Grand Champion Bird of Show - Kelvin and Malcolm Clifford (OEG Black Tail Wheaten Pullet)



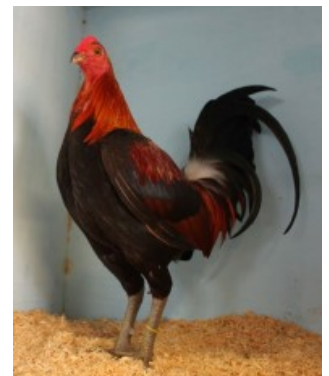
Champion Large Softfeather - Sutton Family
Reserve Champion Large Softfeather - Glenda Hurst
Champion Large Hardfeather - Thelan Family
Reserve Champion Large Hardfeather - Thelan Family
Champion Softfeather Bantam - Neville Ballinger
Reserve Champion Softfeather Bantam - Neville Ballinger
Champion Hardfeather Bantam - Kelvin and Malcolm Clifford
Reserve Champion Hardfeather Bantam - Kelvin and Malcolm Clifford

Champion Large Hardfeather Exhibition Pair - Thelan Family
Champion Large Softfeather Exhibition Pair - Sutton Family
Champion Hardfeather Bantam Exhibition Pair - Kelvin and Malcolm Clifford
Champion Softfeather Bantam Exhibition Pair - Vikki Nichols and Susan Carlson

Champion Large Hardfeather Pair of Pullets - Thelan Family
Champion Large Softfeather Pair of Pullets - Glenda Hurst
Champion Hardfeather Bantam Pair of Pullets - Malcolm McDougall
Champion Softfeather Bantam Pair of Pullets - Neville Ballinger

Champion Waterfowl - Terry and Linda Taylor
Reserve Champion Waterfowl - Jane Cockerton

Champion Junior Exhibitor - Abbie Hargreaves
Reserve Champion Junior Exhibitor - Sophia-Lee Aherne





Show Reports and Results



Maryborough Hervey Bay Poultry Club April Club Show—17 April 2016

CONTINUED

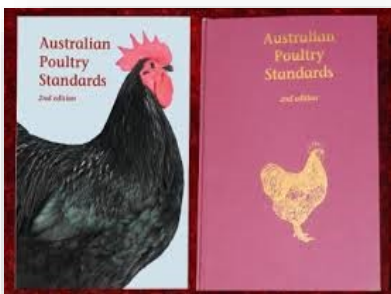
SPECIAL SPONSORED AWARDS

Best OEG Bantam Spangle of Show - Michael Kleidon
 Best OEG Bantam Duckwing of Show - Joynson Park
 Best OEG Bantam Wheaten of Show - Kelvin and Malcolm Clifford
 Best OEG Bantam Black Red of Show - Ken Bauer
 Best OEG Bantam Blue Red of Show - Ken Bauer

Best Belgian of Show - Crissy and Clinton Putman

Champion Large Waterfowl - Terry and Linda Taylor
 Reserve Champion Large Waterfowl - Terry and Linda Taylor
 Champion Bantam Waterfowl - Jane Cockerton
 Reserve Champion Bantam Waterfowl - Terry and Linda Taylor
 Champion Waterfowl Pair - Malcolm McDougall
 3rd Best Waterfowl of Show - Terry and Linda Taylor
 Best Call - Jane Cockerton

Champion Bird of Largest Class - Adam and Kay Theuerkauf (Bantam White Wyandotte Pullet)





Show Reports and Results



Caboolture & District Poultry Club 43rd Annual Club Show—7 May 2016

Judges:

**Large Fowl & Hamburgh Feature - Ian Nash,
Hardfeather Bantam & Waterfowl— Dr Kevin Smith,
Soft Feather Bantam & Belgium Feature - Graham Kemp**

Grand Champion Fowl of Show - Peter Trow (White Wyandotte Bantam)
Reserve Champion Fowl of Show - O&J Glover (OEG Duckwing)
Grand Champion Waterfowl of Show—Jane Cockerton (White Call)
Reserve Champion Waterfowl of Show—Jane Cockerton (White Call)



Champion Large Softfeather - Park & Joyson
Reserve Champion Large Softfeather - Peter Trow
Champion Large Hardfeather - Ben Williamson
Reserve Champion Large Hardfeather - Christopher Plowman
Champion Softfeather Bantam - Peter Trow
Reserve Champion Softfeather Bantam - Geoff Edards
Champion Hardfeather Bantam - O&J Glover
Reserve Champion Hardfeather Bantam - O&J Glover

Champion Waterfowl Heavy - JE Innes
Reserve Champion Waterfowl Heavy - Shaun Jannush
Champion Waterfowl Light - Jenkins Family
Reserve Champion Waterfowl Light - JE Innes
Champion Waterfowl Bantam - Jane Cockerton
Reserve Champion Waterfowl Bantam - Jane Cockerton
Champion Goose or Gander—James Herman
Champion Turkey—Narelle Stone

Belgian Feature

Champion Belgian— R&K Budda-Deen
Reserve Champion Belgian—C&C Puttman
Champion d'Uccle—R&K Budda-Deen
Reserve Champion d'Uccle—C&C Puttman
Champion d'Anver—R&K Budda-Deen
Reserve Champion d'Anver—P Reinke

Hamburgh Feature

Champion Hamburgh —Len Leech
Reserve Champion Hamburgh—Len Leech

Coloured Wyandotte Feature

Champion Coloured Wyandotte—K Weidemann
Champion Large Coloured Wyandotte—Nicholls & Carlson
Champion Bantam Coloured Wyandotte—K Weidemann





Show Reports and Results



Lawnton Poultry Club Annual Show June 26 2016



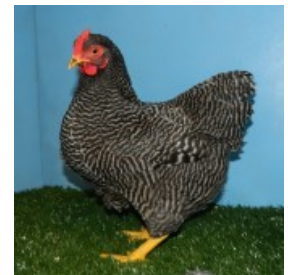
Judges:

Soft Feather Large & Plymoth Rock Feature: Rob Leck
 Soft Feather Bantam: Nealle McLellan
 Hard Feather and Waterfowl: Mal McDougall
 Juniors: Amy Jull



Feature breed – Plymouth Rocks (65 entries)

- Champion Plymouth Rock of Show – I Campbell (large Dark Barred cockerel)
- Champion Large Plymouth Rock – I Campbell (Dark Barred cockerel)
- Champion Bantam Plymouth Rock – Sawyers Family (Dark Barred hen)
- Champion Large Dark Barred – I Campbell
- Champion Large Light Barred – K Barritt
- Champion Large AOC – N&G Gossow (White)
- Champion Bantam Dark Barred – Sawyers Family
- Champion Bantam Light Barred – Sawyers Family
- Champion Bantam AOC – N&G Gossow (White)



Major and special awards

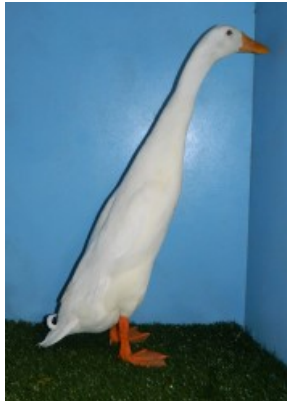
- Grand Champion Landfowl of Show – C&D McCall (Dark Indian Game bantam hen)
- Reserve Champion Landfowl of Show – Sellin Family (Black Pekin cockerel)
- Grand Champion Waterfowl of Show – T&L Taylor (White Mallard drake)
- Reserve Champion Waterfowl of Show – S Nordling 7 D Green (Black and White Muscovy duck)
- Champion SF Large – I Campbell (Dark Barred Plymouth Rock)
- Reserve SF Large – S Abbey (Ancona)
- Champion HF Large – C&D McCall (Blue Red Modern Game)
- Reserve HF Large – I Campbell (OEG Black Red DL)
- Champion SF Bantam – Sellin Family (Black Pekin)
- Reserve SF Bantam – Sellin Family (White Pekin)
- Champion HF Bantam – C&D McCall (Dark Indian Game)



Show Reports and Results



Lawnton Poultry Club Annual Show June 26 2016—CONTINUED



Reserve HF Bantam – C&D McCall (Black Red Modern Game)
 Champion Large Waterfowl – S Nordling & D Green (Black and White Muscovy)
 Reserve Large Waterfowl – T&L Taylor (White Indian Runner)
 Champion Bantam Waterfowl – T&L Taylor (White Mallard)
 Reserve Bantam Waterfowl – T&L Taylor (White Mallard)

Champion Exhibition Pair – C Plowman (large OEG Black Red DL)
 Champion Pair of Females – G Robinson (large RIR R/C)
 Champion Junior Exhibit (Kate baker Memorial) – J Chapman (Millefleur Belgian d'Uccle)
 Champion Turkey or Guinea Fowl – N Stone (Bronze male)
 Champion Developmental Section Exhibit – P West & A Cornett (Scots Grey)
 SF Large Male – I Campbell (Dark Barred Plymouth Rock)
 SF Large Female – Sellin Family (White Sillkie)
 HF Large Male – I Campbell (Black Red OEG DL)
 HF Large Female – C&D McCall (Blue Red Modern Game)
 SF Bantam Male – Sellin Family (Black Pekin)
 SF Bantam Female – Sawyers Family (Dark Barred Plymouth Rock)
 HF Bantam Male – C&D McCall (Black Red LL OEG)
 HF Bantam Female – C&D McCall (Dark Indian Game)

Best Langshan Overall (Merv Schneider Memorial) – L Scott
 Best Indian Game Overall (Brad Muller Memorial) – C&D McCall
 Best HFL other than OEG – C&D McCall (Blue Red Modern Game)
 Best HFB other than OEG – C&D McCall (Dark Indian Game)
 Best Pit Game Overall – P Siebenhausen (large Plain Face)
 Best Plain Face Pit Game – P Siebenhausen (large)
 Best Muff Pit Game – C Plowman (large)
 Best Henfeather OEG – R Jones, J Gilpin & C Davidson
 Best Malay Game – K Macintosh (large Black Red)
 Best Mediterranean Fowl – S Abbey (Ancona)
 Best Ancona Overall – S Abbey (large)
 Best Belgian Overall – N Stone (Millefleur d'Uccle)
 Best Frizzle Overall – A Jull (White bantam)
 Best Hamburgh Overall – Dykstra & Knight (Silver Spangled)
 Best Silkie Overall – Sellin Family (White)
 Best Pekin Overall – Sellin Family (Black)
 Best Pekin other than Black or White – Sellin Family (Mottled)
 Best Sussex Overall – S Nobbs (large Light)
 Best Large Sussex – S Nobbs (Light)
 Best Bantam Sussex – J Hackshall (Light)
 Best AOV SF or HF – Dykstra & Knight (Buttercup)
 Best White Waterfowl – T&L Taylor (Mallard)
 Best Turkey – N Stone (Bronze)
 People's Choice Award – S Abbey (large Ancona)



Show Reports and Results



Central Highlands Feather Club Annual Show 9 July 2016



Grand Champion Bird of Show Russell Whiting
 Reserve Grand Champion Bird of Show Geoff Bashford
 Standard Soft Feather Mandy Bennett
 Reserve Standard Soft Feather Geoff Bashford
 Standard hard Feather Champion Curtis Family
 Reserve hard Feather Champion Curtis Family
 Bantam soft feather champion Geoff Bashford
 Reserve bantam soft feather champion Geoff Bashford
 Bantam hard feather champion Russell Whiting
 Reserve bantam hard feather champion Curtis family

Jr Grand Champion Zoey Taylor
 Reserve Jr Champion Oliver Schubert
 FCAQI Award Nicole Taylor

